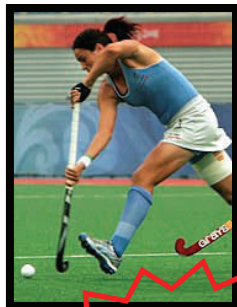




The place for hockey...

[www.whitemountainsports.com](http://www.whitemountainsports.com)



**ONLINE  
REGISTRATION  
AVAILABLE**

## WMS "2010" PROGRAMS

**NEW**

### WMS FIELD HOCKEY ACADEMIES

#### \*\*GOALKEEPING ACADEMY\*\*

#### \*\*PLAYERS' ACADEMY\*\*

(Formerly Combo Camp and Shoot N Save)

**July 25 - 28 @ Deerfield Academy**

### TEAM CAMP

FULL TEAM PRE-SEASON PREPARATION

**August 1 - 4 @ Deerfield Academy**

**2 "turf" fields now at Deerfield**



## WMS "2010" COACHES

### PAM HIXON

Pam Hixon, owner of WMS Enterprises Inc, sponsors numerous field hockey events, programs, camps and services. You will always find Pam on-site, personally promoting all aspects of the WMS programs. Hixon coached the U.S. National Team from 1994-1998, 1996 U.S. Olympic Team, and accumulated a 272-75-18 record in 17 seasons as Head Coach at the University of Massachusetts. Pam has produced numerous All-Americans, an impressive list of Olympians and U.S. National Team Players, her UMass teams competed in 15 consecutive NCAA Tournaments, from 1981 to 1997, including four Final Four appearances. Hixon's experience and field hockey knowledge has kept the WMS programs successful and growing!

### MISSY MEHARG

Missy Meharg, the Head Coach at the University of Maryland and US Level III Certified Coach, Missy brings top level expertise and coaching to the WMS Programs. In her 22 year tenure at Maryland, Meharg has been named "NATIONAL COACH OF THE YEAR" 7 times and has taken her teams to 17 NCAA tournaments with 10 Final Fours. Under Meharg, the "Terps" have won 5 NCAA National Championships.

### AINSLEE LAMB

Ainslee Lamb is the Head Coach at Boston College. The 2009 season marked Ainslee Lamb's fifth year as the head coach of the Boston College Field Hockey program and has lead her team to a 5th consecutive winning season with a 12-8 overall record. Lamb has obtained the USFHA Level III Coaching Certification and serves as the Assistant Coach for the US Under-21 Team. Ainslee previously served 4 years at Yale as their Head Coach and three years as the Assistant Coach at the University of Massachusetts. In addition, she was a member of the Canadian National Team and Olympic Squad.

### PATTY SHEA

Patty Shea, Former Head Coach, University of Massachusetts, Shea led UMASS to 5 NCAA Tournaments, 5 A-10 championships and been selected A-10 COACH OF THE YEAR in 1999 and 2000. Patty competed as the US National Team Goalkeeper for over ten years and is a two-time Olympian, representing the United States on both the 1988 & 1996 Olympic Teams.



[www.whitemountainsports.com](http://www.whitemountainsports.com)

## WMS PROGRAM TUITIONS

- \$460.00 Field Hockey Academies - Overnight
- \$460.00 "Team Camp" - Overnight
- \$310.00 "Academy" & "Team" - Day Camper

## REGISTRATION AND PAYMENT METHODS

**GROUP REBATES FOR WMS 2010 PROGRAMS:**  
Schools and/or Clubs registering 24 or more resident campers will receive a **\$20.00/per player cash rebate** once all 24 team members check-in.

**\*\*Online Registration is available.** Log onto: [www.whitemountainsports.com](http://www.whitemountainsports.com) to register online.

**\*\*Mail in Registrations will be accepted until the programs are full.**

Payments by personal checks for deposits and/or balances will only be accepted until July 1st. After July 1st, balances due must be paid either online or on-site at check-in where only cash, money orders or credit cards will be accepted.

## DEPOSITS ARE NON-REFUNDABLE

- \$200.00 for the Academy
- \$200.00 for Team Camp

The deposit MUST accompany your registration form to secure a space in all White Mountain Sports programs. Deposits are non-refundable regardless of enrollment date.

Upon receipt of deposit and registration form, participants will receive a confirmation and detailed program information. **WMS program enrollments are limited and based on a first-come, first-served basis.**

## ARRIVAL INFORMATION

**WMS FIELD HOCKEY ACADEMIES :** Check-in on Sunday will be held from 12 noon - 1:30 at Deerfield Academy. The first session is scheduled to begin promptly at 2:00pm.

**TEAM CAMP:** Check-In on Sunday will be held from 12 noon - 1:30pm at the Deerfield Academy Gymnasium. The first session is scheduled to begin promptly at 2:00pm.

## DEPARTURE INFORMATION

**WMS FIELD HOCKEY ACADEMIES:** Participants should be picked up by 4:00pm on Wednesday. The WMS tournament finals begin approximately at 2:00pm on Wednesday. Immediately following tournament games the WMS Awards ceremony, recognizing tournament winners and special camp award winners, will take place. Parents and friends are invited to attend the final afternoon's events

**TEAM CAMP:** Participants should be picked up by 4:00pm on Wednesday. The WMS tournament finals begin approximately at 2:00pm on Wednesday. Immediately following tournament games the WMS Awards ceremony, recognizing tournament winners and special camp award winners, will take place. **Parents and friends are invited to attend the final afternoon's events.**

## LOCATIONS AND FACILITIES

**WMS FIELD HOCKEY ACADEMIES** will be located at Deerfield Academy in Deerfield, Massachusetts. Deerfield now boasts **2 new artificial "turf" fields** along with 12 beautifully groomed grass fields. Deerfield Academy is located off Interstate 91 at exit 24. It is 60 minutes from Bradley International Airport. Door to Door shuttles are available from the airport to the dorm for your convenience. Complete directions are available on the WMS website.

"**TEAM**" **CAMP** is located in Deerfield, Massachusetts. The Academy is one of the oldest and most renown private schools in the country. **Deerfield's facilities include 2 NEW FULL SIZE TRUF FIELDS**, 12 beautifully groomed grass fields, a re-surfaced ice rink, 2 gyms for indoor play, plus the beautiful DA swimming & diving facility. Complete directions are available on the WMS website.

## TRANSPORTATION

These programs all have easy access from the Massachusetts Turnpike and Interstate 91. Bus, train, air and shuttle services are available to most locations. Bradley International Airport services Westfield State College and Deerfield Academy, with door to door shuttles servicing both locations.

**White Mountain Sports does not provide any means of transportation for its participants. It is the sole responsibility of all participants to make their own travel arrangements.**

While not encouraged, participants are permitted to drive to camp. For resident campers who drive, all cars must be parked correctly, and drivers will be required to give their keys to the DIRECTOR for the duration of the camp program. Participants who drive are not permitted to use their vehicles during the camp.

All participants receive a  
**WMS Camp Pack**  
Pack includes a WMS reversible vest, a hockey ball, and more!  
GK'S will receive an official WMS GK Jersey!

## WHAT TO BRING

A complete list of "what to bring" will be posted on the WMS website. **Each participant MUST provide her OWN EQUIPMENT, including goalkeepers.** All campers MUST bring a pillow, bedding or sleeping bag, stick, cleats, "turf-shoes", and indoor/court shoes. Participants are permitted to bring fans; **shin guards, mouthguards are MANDATORY at ALL sessions.** Field hockey equipment, specialty clothing and



## WMS PROGRAM "CAPSULES"

**WMS GOALKEEPING ACADEMY** and the **PLAYERS' ACADEMY** are designed to meet the ever-growing demand for both a high level specialty coaching of both scoring and goalkeeping as well as provide a great curriculum for individuals, small team groups and full teams preparing for pre-season. The new Academies are intended to improve the Combo Camp curriculum and provide more direct coaching for Goalkeepers and goal scorers.

Enrollment to the Academy programs is limited, open to only 40 goalkeepers and up to 150 field players. Goalkeepers will work on goaltending techniques and decision-making. Field players will focus on a variety of skills, scoring techniques (including penalty corner shots and pieces), and developing "attacking opportunities." Skills for all aspects of the game will be part of the curriculum, and every athlete will compete in the WMS tournament each day. I encourage full teams, partial teams, small groups, and individuals looking to improve their skills and game understanding to enroll in the WMS Academies.

*Enrollment is limited so register early!*

**TEAM CAMP** continues to be White Mountain Sports' most popular program. **Team Camp** is for **FULL TEAMS ONLY**. Teams registered will have the opportunity to experience and practice team-building, skills, and tactics specifically designed for each team's ability level. All teams compete in **FULL FIELD, 11 v 11, tournament games every day!** Team Camp is a great way to prepare your team for your next season's run-up to success! To reserve a spot for your team in this session, please complete the **ROSTER** and follow the **TEAM REGISTRATION** instructions. This camp fills quickly so please get your team together soon to take advantage of this great experience!!!

## WMS COACHES

White Mountain Sports offers a broad range of excellent Head Coaches in all of our programs. 2010 coaches will include Division 1,2 and 3 College coaches, top level high school coaches, international coaches plus top collegiate players as assistant coaches. We also may include members of our Men's and Women's National Teams if their schedules allow. All WMS camp programs are have certified athletic trainers on duty with a PA or local physician "on call". WMS complies with State of Massachusetts requirements.

**WHITE MOUNTAIN SPORTS**  
P.O. Box 55, Hadley, MA 01035  
PHONE: (413) 256-4258  
FAX (413) 825-8474 or (413) 825-5555  
**WWW.WHITEMOUNTAINSPTS.COM**

## TEAM REGISTRATION

Team Camps continue to be White Mountain Sports' most popular programs. We encourage teams to enroll early to reserve your spot in either of the Team Camps. **FULL TEAM**, school teams / club teams must meet the following criteria:

- **FULL TEAM** (School/ Club) must register 12 players plus at least 1 GK
- **Register by MAIL**- all Registration forms, deposits and **TEAM ROSTER** must be mailed together to the White Mountain Sports Camp office
- **Registration ONLINE** - Go the WMS website and register! **Team Roster** should be FAXED ( 413-825-5555 ) or MAILED to the WMS camp office.

**School / Clubs registering 24 or more resident campers will receive a \$20.00 /player cash rebate once all team members check-in on site.**

**(24 or more must check-in to receive rebate)**

Whichever registration option you choose, be sure to register early to reserve your spot in the WMS TEAM CAMPS. Enrollment is limited and on a first-come-first-served basis!

**Get a JUMP on preseason and HEADSTART on your competition**

## WMS 2010 TEAM ROSTER

TEAM NAME:	VAR or JV
PRINT LAST_ Name FIRST_ Name	Position
1. _____	_____
2. _____	_____
3. _____	_____
4. _____	_____
5. _____	_____
6. _____	_____
7. _____	_____
8. _____	_____
9. _____	_____
10. _____	_____
11. _____	_____
12. _____	_____
13. _____	_____
14. _____	_____
15. _____	_____
16. _____	_____
17. _____	_____
18. _____	_____

Contact-Captain-Coach Name: \_\_\_\_\_

Phone (       ) \_\_\_\_\_

Contact Email: \_\_\_\_\_

## WMS 2010 Registration Form

- WMS Goalkeeping Academy** July 25 - 28 @ Deerfield  
 Overnight  Day
- WMS Players' Academy** July 25 - 28 @ Deerfield  
 Overnight  Day
- "TEAM" Camp** August 1 - 4 @ Deerfield  
 Overnight  Day

**To Register by MAIL**  
Complete form and mail with FULL PAYMENT of \$460.00 or DEPOSIT of \$200.00  
Make payable to: White Mountain Sports  
PO Box 55, Hadley, MA 01035

**To Register ON-LINE**  
Log in to: [www.whitemountainsports.com](http://www.whitemountainsports.com)

First Name \_\_\_\_\_ Last Name \_\_\_\_\_

Street Address \_\_\_\_\_

City \_\_\_\_\_ State \_\_\_\_\_

Zip Code \_\_\_\_\_ Home Phone (       ) \_\_\_\_\_

Parent Email \_\_\_\_\_

Camper Email \_\_\_\_\_

High School \_\_\_\_\_

Date of Birth \_\_\_\_\_ YR of HS GRAD \_\_\_\_\_

Position: FOR MID DEF GK (circle 1 position)

Years Experience: **VAR:** 1 2 3 **JV:** 1 2 3 **JRHS:** 1 2 3

Roommate request: \_\_\_\_\_

**ONE ONLY! Request honored ONLY if double rooms are available**

In case of Emergency Notify: \_\_\_\_\_

Relationship: \_\_\_\_\_

Emergency Contact Phone: \_\_\_\_\_

Secondary Contact Phone: \_\_\_\_\_

Health Insurance Company \_\_\_\_\_

Policy# \_\_\_\_\_

Membership # \_\_\_\_\_

**I understand and accept that the risk of injury is possible while playing or participating in the sport of field hockey. I authorize the directors to act for me according to their best judgment in any emergency that may require medical attention.**

\*\*\* \_\_\_\_\_

PARENT'S SIGNATURE REQUIRED

\*\*\* \_\_\_\_\_